

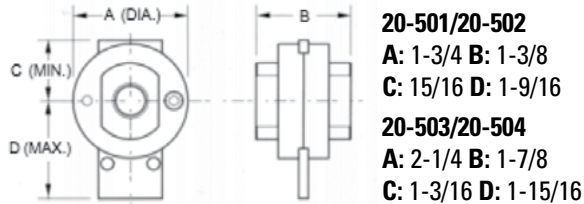
ACCESSORIES: Lockout Valves



Features

- Available in 1/8" through 1/2" NPT
- Relieve downstream pressure in closed position
- Can be locked in closed position for safety purposes

Dimensions



Materials of Construction

Body: Machined Aluminum
Slide: Brass
Seals: Buna-N (Fluorocarbon Available)
Screws: Black oxide coated screws

Ordering Information

20-501

Pipe Size		Anodizing	
1/8"	1	None	Blank
1/4"	2	Blue	A1
3/8"	3	Black	A2
1/2"	4	Clear	A3
		Green	A4
		Red	A5
		Yellow	A6
		Gold	A7
		Purple	A8

ACCESSORIES: Drains

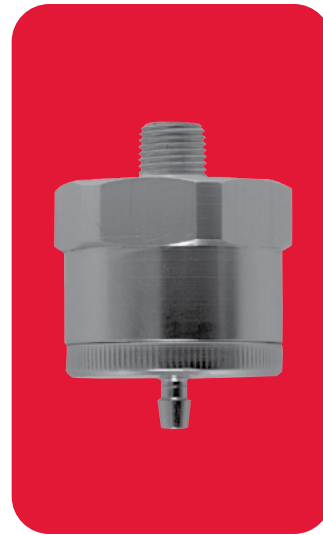


Float Drains

Monnier float drains automatically discharge liquid from filters, drip legs and tanks.

Features

- Stainless steel mesh screen protects float mechanism from particulate
- 1/4" or 1/2" female NPT inlet
- 1/8" NPT outlet
- Manual override
- Clear anodized housing standard



Impulse Drains

Monnier impulse drains automatically discharge liquid from filters, drip legs and tanks.

Features

- 1/8" Male NPT inlet
- Barb fitting for 3/16" ID tube outlet
- Clear anodized housing standard

Materials of Construction

Body: Anodized Machined Aluminum
Float: Acetal and Stainless Steel
Seals: Buna-N (Fluorocarbon Available)

Ordering Information

20-401

Pipe Size		OPTIONS	
1/4"	2	Anodizing	
1/2"	4	Clear (standard)	Blank
		Blue	A1
		Black	A2
		Green	A4
		Red	A5
		Yellow	A6
		Gold	A7
		Purple	A8
		Seals	
		Buna-N	Blank
		Fluorocarbon	V

Materials of Construction

Body: Anodized Machined Aluminum
Internals: Aluminum and Brass
Seals: Buna-N (Fluorocarbon Available)

Ordering Information

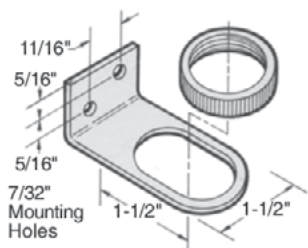
20-101

Pipe Size		OPTIONS	
1/8"	1	Anodizing	
1/4"	2	Clear (standard)	Blank
3/8"	3	Blue	A1
1/2"	4	Black	A2
		Green	A4
		Red	A5
		Yellow	A6
		Gold	A7
		Purple	A8
		Seals	
		Buna-N	Blank
		Fluorocarbon	V

ACCESSORIES: Mounting

BONNET MOUNTING TYPE

**FOR UNITS WITH:
POLYCARBONATE BONNETS
SERIES 101-3000,
104-3100 and B01-3000**

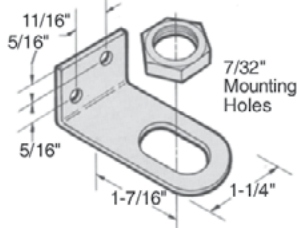


Part# 13536

Panel Nut Only - Part #13133

This is a zinc-plated steel bracket and aluminum panel nut. Panel nut may be anodized in any of eight colors.

**FOR UNITS WITH:
ALUMINUM BONNETS
SERIES 111-3000,
102-3000, C01-3000,
106-3100 and 114-3100**

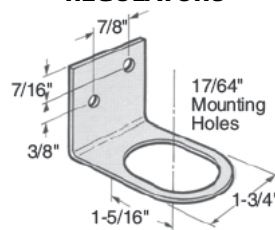


Part# 13534

Panel Nut Only - Part #13025

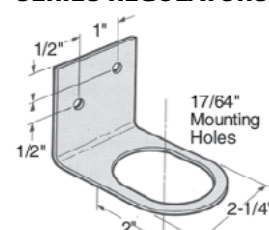
This is a zinc-plated steel bracket and aluminum panel nut. Panel nut may be anodized in any of eight colors.

**FOR USE WITH
105/106-1000 SERIES
REGULATORS**



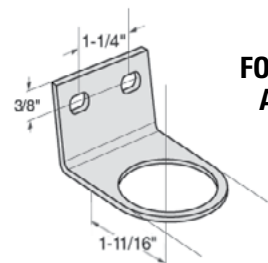
Part# 11122

**FOR USE WITH 102/103-1000
and 117-4000/5000 PS
SERIES REGULATORS**



Part# 11123

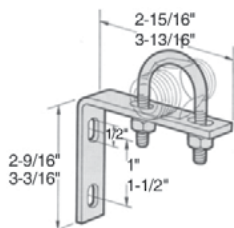
**FOR USE WITH B05-1000
AND 108-1000 SERIES**



11430

PIPE MOUNTING TYPE

FOR USE WITH: 1000/4000/5000 SERIES



Part# 11543: For pipe sizes 1/4", 3/8" and 1/2"

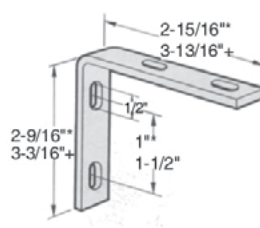
Part# 11542: For pipe sizes 3/4" and 1"

This is a zinc-plated steel bracket with U-bolt and lock nuts as shown.

The U-bolt fits around the inlet or outlet pipe, nipple, etc.

ANGLE MOUNTING TYPE

FOR USE WITH: 1000/2000/3000 SERIES



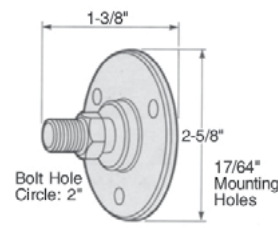
Part# 11038: Use with 1000/2000/3000 Series

Part# 15037: Use with 4000/5000 Series

Note: Filters and lubricators must be ordered with two 1/4-20 mounting holes on top surfaces. Add suffix "MH" to model number.

STUD MOUNTING TYPE

FOR USE WITH: 1000/4000/5000 SERIES



Part# 11520: For 1/4", 3/8", 1/2", 3/4", and 1" (Aluminum construction)

These mounting brackets are designed to fit all regulators with 1/4" gauge ports. Remove the pipe plug in the back of the regulator and insert stud.

Notes:

1. For filters and lubricators, order with 1/4" NPT mounting holes on side surface. Add suffix "MS" to model number.
2. Cannot use "MH" or "MS" option with miniature lubricators. Could use pipe mounting type bracket #11543.

ACCESSORIES: Pressure Drop Indicator



The Monnier pressure drop indicator is available as a separate device to measure the pressure drop across any pneumatic equipment.

Operating Specifications

Ports: 1/8" Male NPT
Part#: 21540