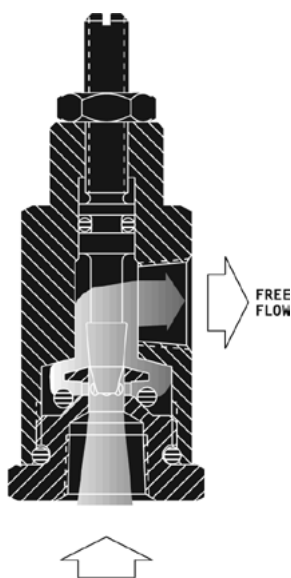
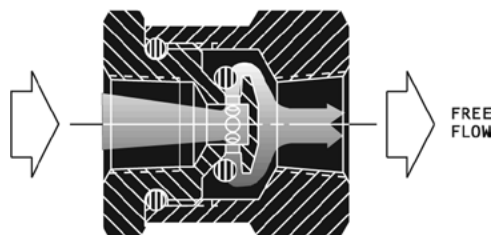




# Check Valves & Flow Controls



## Check Valves

Lightweight aluminum O-Check® features a dilating o-ring as the only moving part. Quick to open, quick to close, O-Check 'outflows' the competition, will last millions of cycles (factory tests to 50 million cycles show no discernible wear) and always provides positive sealing (no bubble leakage). Standard NPTF sizes 1/8", 1/4", 3/8", 1/2" and 3/4" and orifices available for fixed flow control applications.

## Flow Controls

Right angle flow controls incorporate O-Check as the bypass valve. MRFC permits full free flow in one direction, accurately metered flow in opposite direction. Standard metering needle design includes compound needle taper of 5° and 15° and fine adjustment stem threads (MRFC 1/4 for example is 1/4" - 36). Right angle design eliminates the need for pipe elbow fitting normally used to make 90° turn at cylinder port. Standard NPTF sizes 1/8", 1/4", 3/8", 1/2" and 3/4". Adjustment knobs and panel mounting available (NPTF sizes 1/8", 1/4" and 3/8" only). Optional swivel connector allows "direct" cylinder mounting and 360° rotation for ease of installation and space saving (NPTF sizes 1/8", 1/4", 3/8", and 1/2" only).

## Benefits

- Compact design adds to the appearance of any type of equipment.
- All valves are individually tested before they leave the factory.
- Tests up to 50 million cycles show no discernible wear and still perform "bubble-tight."

## Specifications

**Maximum Operating Pressure:** 250 psi

**Operating Temperature Range:** -40° - +225°F.

**Standard O-Ring Material:** Buna-N (Flourocarbon available on 1/8", 1/4" and 3/8" NPTF models)

**Standard Valve Body Material:** Aluminum

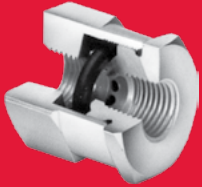
**Standard Needle Material:** Brass

**Standard Swivel Connector Material:** Zinc-Plated Steel

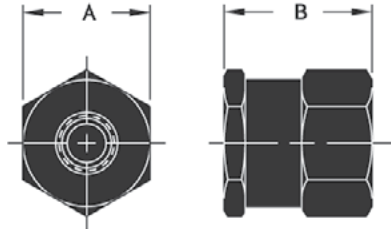
### WARRANTY:

Monnier, Inc. warrants each product against defects in material and workmanship for a period of one year from the date of manufacture providing its use was in accordance with Monnier, Inc. recommendations. If the product fails to perform as warranted, Monnier, Inc. will, at its option, repair or replace the product free of charge. The company will not be liable for incidental or consequential damages. We make no other warranty, expressed or implied, including warranties of merchantability or fitness for a particular purpose.

# CHECK VALVES: O-CHECK® MCV Series

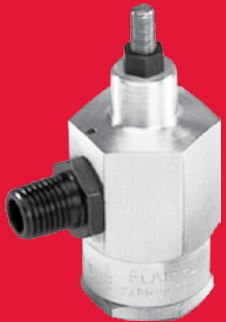


## Diagram

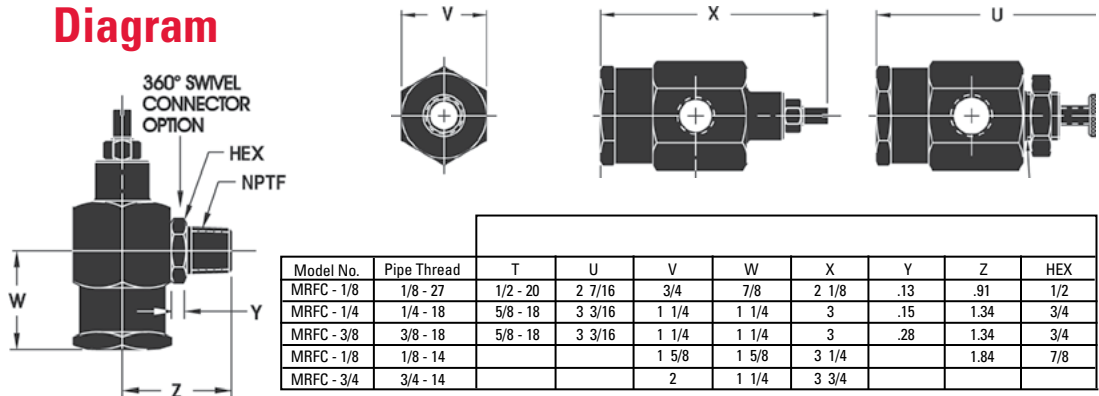


Model No.	Pipe Thread	A	B
MCV - 1/8	1/8 - 27	3/4	15/16
MCV - 1/4	1/4 - 18	1 1/8	1 15/16
MCV - 3/8	3/8 - 18	1 1/8	1 15/16
MCV - 1/8	1/8 - 14	1 5/8	1 9/16
MCV - 3/4	3/4 - 14	1 7/8	2 5/16

# FLOW CONTROLS: RIGHT ANGLE MRFC Series

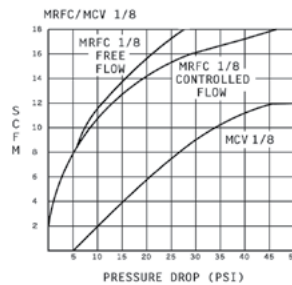
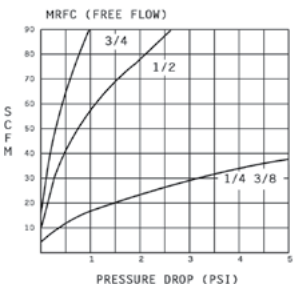
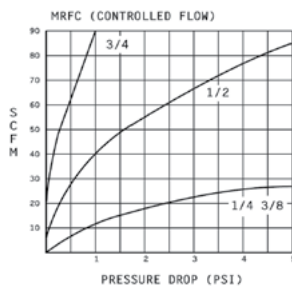
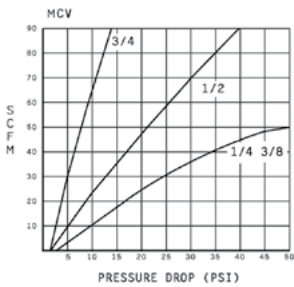


## Diagram



Model No.	Pipe Thread	T	U	V	W	X	Y	Z	HEX
MRFC - 1/8	1/8 - 27	1/2 - 20	2 7/16	3/4	7/8	2 1/8	.13	.91	1/2
MRFC - 1/4	1/4 - 18	5/8 - 18	3 3/16	1 1/4	1 1/4	3	.15	1.34	3/4
MRFC - 3/8	3/8 - 18	5/8 - 18	3 3/16	1 1/4	1 1/4	3	.28	1.34	3/4
MRFC - 1/8	1/8 - 14			1 5/8	1 5/8	3 1/4		1.84	7/8
MRFC - 3/4	3/4 - 14			2	1 1/4	3 3/4			

## Flow Charts



## Ordering Information

SERIES	CODE	NPFT	OPTIONS	CODE	O-RINGS	CODE
O-Check	MCV	1/3-3/8 Orifice	1/32 Orifice	031	Buna - N (Standard) Viton	V
			1/16 Orifice	063		
Right Angle Flow Control	MRFC	1/8 to 3/8	3/32 Orifice	094	Buna - N (Standard) Viton	V
			1/8 Orifice	125		
			*Contact Factory for other sizes			
			Knob Panel Mount Knob & Panel Mt Swivel Swivel Knob	K P PK S SK	Buna - N (Standard) Viton	V
		1/2	Swivel	S		
		3/4				