



Features

- Coalescing filter and regulator consolidated into one assembly
- Reduces footprint of air prep assembly
- Polycarbonate or aluminum bowls available
- Manual, float or impulse drains available
- Preset and tamperproof options
- Gauges available
- 0.3 and 0.01 Micron elements available
- Green anodized body standard, other colors available

Operating Specifications

Bowl Capacity: 8 oz.

Maximum Pressure Ratings:

- Metal Bowl: 250 PSI

- Polycarbonate Bowl: 150 PSI

Temperature Ratings:

- Metal Bowl: 0-200°F

- Polycarbonate Bowl: 0-120°F

Accessories & Kits

Elements: 0.3 Micron: 21720 - 0.01 Micron: 21762

REGULATOR KITS: 20-250 PSI Outside 20-250 PSI

Relieving: 11538 11531

Non-Relieving: 11539 11532

Bowl Kits: - Polycarbonate Bowl Kit: 21557

- Polycarbonate Bowl Kit w/ Float Drain: 21572

- Metal Bowl Kit w/ Float Drain: 21583

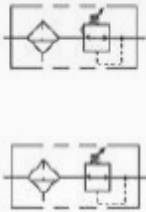
Metal Bowl Kit: 21580

Metal Bowl with Sight Level Kit

(Polycarbonate/ Trogamid): 21581-P or 21581-T

Metal Bowl with Float Drain and Sight Level Kit

(Polycarbonate/ Trogamid): 21583-P or 21583-T



Materials of Construction

Body: Machined Aluminum

Bonnet: Machined Aluminum or Polycarbonate

Spring Guide: Zinc Plated Steel

Diaphragm Gasket: Stainless Steel

Valve Seat: Brass

Poppet Valve Spring: Stainless Steel

Seals: Buna-N (fluorocarbon available)

Whirl Disc: Aluminum

Stud: Zinc Plated Steel

Drain:

Manual: Plastic

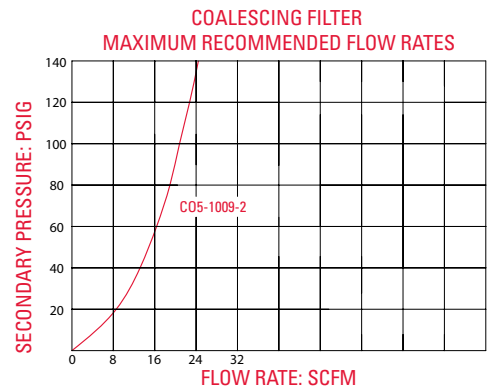
Float: Acetal and Stainless Steel

Impulse: Machined Aluminum, Brass, and Buna-N (fluorocarbon available)

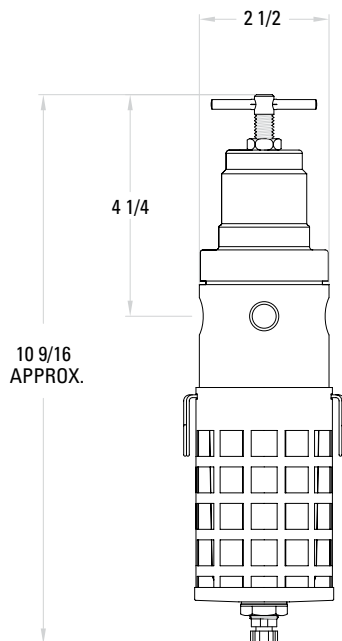
Bowl: Polycarbonate or Aluminum

Bowl Guard: Stainless Steel

Flow Characteristics



Dimensions



Ordering Information

C05-1009-2

Bowl Type	
Polycarbonate	0
Polycarbonate w/ Guard	1
Metal	2
Metal w/ Sight Level	3

Pressure	
10-130 Relieving	0
10-130 Non-Relieving	1
5-60 Relieving	2
5-60 Non-Relieving	3
3-30 Relieving	4
3-30 Non-Relieving	5
20-250 Relieving	6
20-250 Non-Relieving	7

Elements	
0.3 Micron	9
0.01 Micron	8

Pipe Size	
1/4"	2
3/8"	3
1/2"	4

OPTIONS

Anodizing

Green (Standard)	Blank
Blue	A1
Black	A2
Clear	A3
Red	A5
Yellow	A6
Gold	A7
Purple	A8

Attachment Parts

Gauge	G
Bracket	B
Knob	K

Seals

Buna-N (Standard)	Blank
Fluorocarbon	V

Drain

Manual (Standard)	Blank
Float (Internal)	F
Impulse (External)	D

Tamperproof

Tamperproof	T
Preset	P
Preset and Tamperproof	PT