

## ACCESSORIES: Lockout Valves



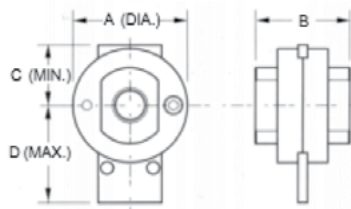
### Features

- Available in 1/8" through 1/2" NPT
- Relieve downstream pressure in closed position
- Can be locked in closed position for safety purposes

### Materials of Construction

**Body:** Machined Aluminum  
**Slide:** Brass  
**Seals:** Buna-N (fluorocarbon available)  
**Screws:** Black oxide coated screws

### Dimensions



**20-501/20-502**  
**A:** 1-3/4 **B:** 1-3/8  
**C:** 15/16 **D:** 1-9/16

**20-503/20-504**  
**A:** 2-1/4 **B:** 1-7/8  
**C:** 1-3/16 **D:** 1-15/16

### Ordering Information

<b>20-501</b>		<b>Anodizing</b>	
		None	Blank
<b>Pipe Size</b>		Blue	A1
		Black	A2
		Clear	A3
		Green	A4
		Red	A5
		Yellow	A6
		Gold	A7
		Purple	A8
1/8"	1		
1/4"	2		
3/8"	3		
1/2"	4		

## ACCESSORIES: Drains

### Float Drains



Monnier float drains automatically discharge liquid from filters, drip legs and tanks.

### Features

- Stainless steel mesh screen protects float mechanism from particulate
- 1/4" or 1/2" female NPT inlet
- 1/8" NPT outlet
- Manual override
- Clear anodized housing standard

### Impulse Drains



Monnier impulse drains automatically discharge liquid from filters, drip legs and tanks.

### Features

- 1/8" Male NPT inlet
- Barb fitting for 3/16" ID tube outlet
- Clear anodized housing standard

### Materials of Construction

**Body:** Anodized Machined Aluminum  
**Float:** Acetal and Stainless Steel  
**Seals:** Buna-N (fluorocarbon available)

### Ordering Information

<b>20-401</b>		<b>OPTIONS</b>	
<b>Pipe Size</b>		<b>Anodizing</b>	
1/4"	1	Clear (standard)	Blank
1/2"	4	Blue	A1
		Black	A2
		Green	A4
		Red	A5
		Yellow	A6
		Gold	A7
		Purple	A8
		<b>Seals</b>	
		Buna-N	Blank
		Fluorocarbon	V

### Materials of Construction

**Body:** Anodized Machined Aluminum  
**Internals:** Aluminum and Brass  
**Seals:** Buna-N (fluorocarbon available)

### Ordering Information

<b>20-101</b>		<b>OPTIONS</b>	
		<b>Anodizing</b>	
		Clear (standard)	Blank
		Blue	A1
		Black	A2
		Green	A4
		Red	A5
		Yellow	A6
		Gold	A7
		Purple	A8
		<b>Seals</b>	
		Buna-N	Blank
		Fluorocarbon	V

**For 3000 Series Regulators, 1/8" NPT Centerback or Panel Mounted**

**Ordering Information**



Pressure (PSI)	Range (kPa)	Centerback Part Number	Panel MTND Part Number
0-30	0-200	13528	-
0-60	0-400	13529	-
0-100	0-700	13523	-
0-160	0-1100	13524	*13576
0-200	0-1400	13558	-

\*1-5/8" diameter hole for panel mounting

**All gauges have dual scales, PSI and kPa  
100 kPa = 1 bar = 14.5 PSI**

**For 1000, 4000 & 5000 Series Regulators**

**Ordering Information**

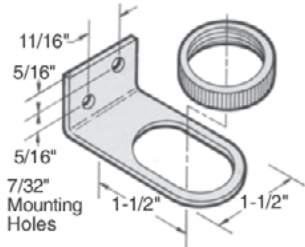


Pressure (PSI)	Range (kPa)	1/4" Centerback Part Number	1/4" Bottom Part Number
0-30	0-200	-	11552
0-60	0-400	11526	11553
0-100	0-700	11527	11554
0-160	0-1100	11528	11555
0-200	0-1400	11550	-

Note: Custom logo gauges are available please consult factory.

## BONNET MOUNTING TYPE

**FOR UNITS WITH:  
POLYCARBONATE BONNETS  
SERIES 101-3000,  
104-3100 and B01-3000**

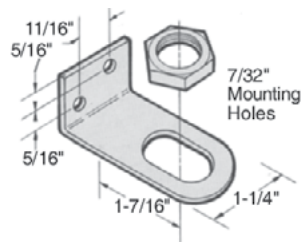


**Part# 13536**

**Panel Nut Only - Part #13133**

This is a zinc-plated steel bracket and aluminum panel nut. Panel nut may be anodized in any of eight colors.

**FOR UNITS WITH:  
ALUMINUM BONNETS  
SERIES 111-3000,  
102-3000, C01-3000,  
106-3100 and 114-3100**

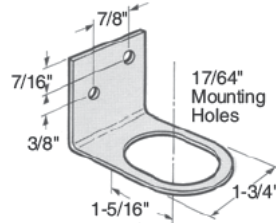


**Part# 13534**

**Panel Nut Only - Part #13025**

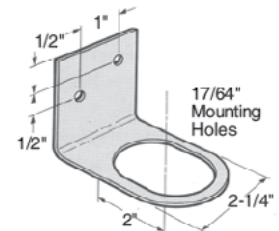
This is a zinc-plated steel bracket and aluminum panel nut. Panel nut may be anodized in any of eight colors.

**FOR USE WITH  
105/106-1000 SERIES  
REGULATORS**

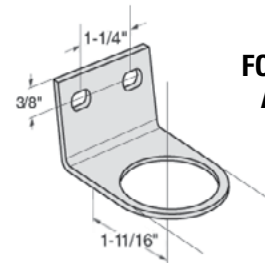


**Part# 11122**

**FOR USE WITH 102/103-1000  
and 117-4000/5000 PS  
SERIES REGULATORS**



**Part# 11123**

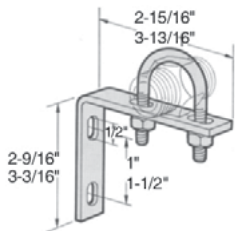


**FOR USE WITH B05-1000  
AND 108-1000 SERIES**

**# 11430**

## PIPE MOUNTING TYPE

**FOR USE WITH: 1000/4000/5000 SERIES**



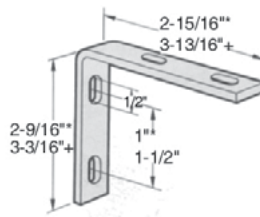
**Part# 11543:** For pipe sizes 1/4", 3/8" and 1/2"

**Part# 15542:** For pipe sizes 3/4" and 1"  
**U-Bolt# 11040**

This is a zinc-plated steel bracket with U-bolt and lock nuts as shown. The U-bolt fits around the inlet or outlet pipe, nipple, etc.

## ANGLE MOUNTING TYPE

**FOR USE WITH: 1000/2000/3000 SERIES**



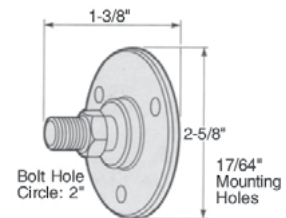
**Part# 11038:** Use with 1000/2000/3000 Series

**Part# 15037:** Use with 4000/5000 Series  
**Kit# 11537:** (Mtg brkt and Cap screw)

**Note:** Filters and lubricators must be ordered with two 1/4-20 mounting holes on top surfaces. Add suffix "MH" to model number.

## STUD MOUNTING TYPE

**FOR USE WITH: 1000/4000/5000 SERIES**



**Part# 11520:** For 1/4", 3/8", 1/2", 3/4", and 1" (Aluminum construction)  
These mounting brackets are designed to fit all regulators with 1/4" gauge ports. Remove the pipe plug in the back of the regulator and insert stud.

**Notes:**

1. For filters and lubricators, order with 1/4" NPT mounting holes on side surface. Add suffix "MS" to model number.
2. Cannot use "MH" or "MS" option with miniature lubricators. Could use pipe mounting type bracket #11543.

## ACCESSORIES: **Pressure Drop Indicator**



The Monnier pressure drop indicator is available as a separate device to measure the pressure drop across any pneumatic equipment.

### Operating Specifications

**Ports:** 1/8" Male NPT  
**Part#:** 21540