



Features

- Coalescing filter and regulator consolidated into one assembly
- Reduces footprint of air prep assembly
- Polycarbonate or Aluminum Bowls available
- Manual, Float or Impulse drains available
- Preset and Tamperproof options
- Gauges available
- Body comes green anodized as standard (other colors available)
- 0.3 and 0.01 Micron Elements available

Operating Specifications

Bowl Capacity: 8 oz.

Maximum Pressure Ratings:

- Metal Bowl: 250 PSI
- Polycarbonate Bowl: 150 PSI

Temperature Ratings:

- Metal Bowl: 0-200°F
- Polycarbonate Bowl: 0-120°F

Accessories & Kits

Elements: - 0.3 Micron: 21545 - 0.01 Micron: 21751

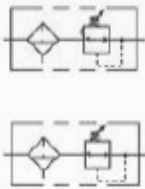
Regulator Repair Kits:

- Relieving: 11531 Relieving(20-250): 11538
- Non-Relieving: 11532 Relieving (20-250): 11539

Bowl Kits: Polycarbonate Bowl: 21557

Aluminum Bowl: 21558

Aluminum Bowl w/ sight level: 21559-P (Polycarbonate) or 21559-T (Trogamid)



Materials of Construction

Body: Anodized Machined Aluminum

Bonnet: Aluminum

Spring Guide: Mild Steel

Compression Spring: Spring Steel

Diaphragm Gasket: Stainless Steel

Valve Seat: Brass

Poppet Valve Spring: Stainless Steel

Seals: Buna-N (fluorocarbon available)

Whirl Disc: Copolymer Acetal

Element: Borosilicate glass fibers

Stud: Zinc Plated Steel

Baffle Plate: Acetal

Base Nut: Aluminum

Bowl: Polycarbonate or Aluminum

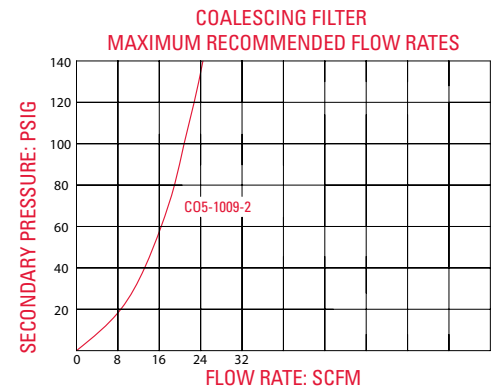
Bowl Guard: Stainless Steel

Drain: - Manual: Brass and Plated Steel

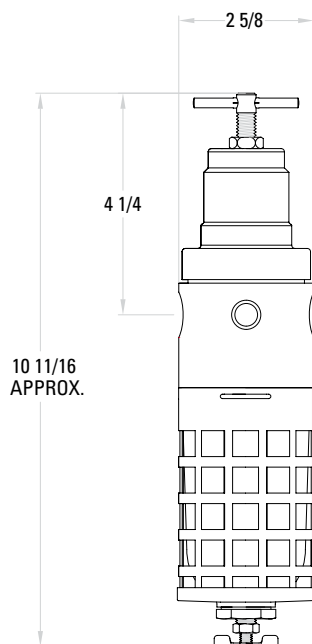
- Float: Anodized Aluminum w/ Acetal and Stainless Steel Float Mechanism

- Impulse: Machined Aluminum, Brass, and Buna-N

Flow Characteristics



Dimensions



Ordering Information

C01-1009-2

Bowl Type	
Polycarbonate	0
Polycarbonate w/ Guard	1
Metal	2
Metal w/ Sight Level	3

Pressure	
10-130 Relieving	0
10-130 Non-Relieving	1
5-60 Relieving	2
5-60 Non-Relieving	3
3-30 Relieving	4
3-30 Non-Relieving	5
20-250 Relieving	6
20-250 Non-Relieving	7

Elements	
0.3 Micron	9
0.01 Micron	8

Pipe Size	
1/4"	2
3/8"	3
1/2"	4

OPTIONS

Anodizing	
Green (Standard)	Blank
Blue	A1
Black	A2
Clear	A3
Red	A5
Yellow	A6
Gold	A7
Purple	A8
Drain	
Manual (Standard)	Blank
Impulse (External)	D
Float (External)	F
Seals	
Buna-N (Standard)	Blank
Fluorocarbon	V
Tamperproof	
Tamperproof	T
Preset	P
Preset and Tamperproof	PT
Attachment Parts	
Bracket	B
Gauge	G
Knob	K