



Features

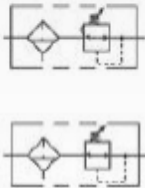
- Filter and regulator consolidated into one assembly
- Reduces footprint of air prep assembly
- Tie-rod construction for maximum stability
- Polycarbonate or aluminum bowls available
- Manual, float or impulse drains available
- Preset and tamperproof options
- 1000 Series has a greater bowl capacity to accommodate a larger sump area
- 2000 Series has a compact design for applications where space is at a premium

Operating Specifications

- Bowl Capacity:** 5 oz. or 8 oz.
Maximum Pressure Ratings:
 - Metal Bowl: 250 PSI
 - Polycarbonate Bowl: 150 PSI
Temperature Ratings:
 - Metal Bowl: 0-200°F
 - Polycarbonate Bowl: 0-120°F

Accessories & Kits

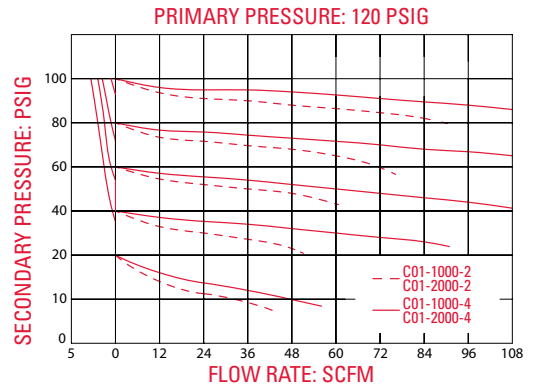
- (2000 Series)** 20 Micron: 22205 - 10 Micron: 22033
 - 3 Micron: 22032
(1000 Series) 20 Micron: 21205 - 10 Micron: 21036
 - 3 Micron: 21037
Regulator Kits: Relieving: 11531 Relieving (20-250): 11538
 Non-Relieving: 11532 Non-Relieving (20-250): 11539
Bowl Kits:
- | | Poly. | Alum. | Alum. w/Sight Level |
|-------------|-------|-------|---------------------|
| 2000 Series | 22520 | 22537 | 22521-P OR 22521-T |
| 1000 Series | 21557 | 21558 | 21559-P OR 21559-T |



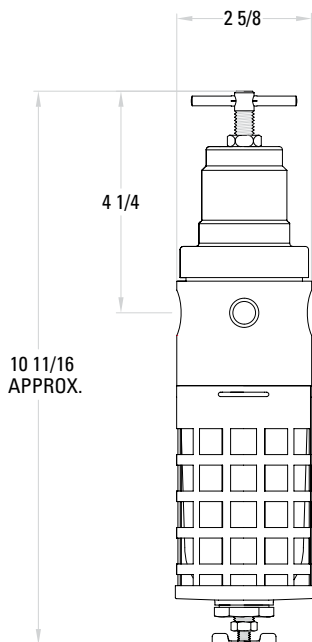
Materials of Construction

- Body:** Machined Aluminum
Bonnet: Aluminum
Spring Guide: Zinc Plated Steel
Compression Spring: Spring Steel
Diaphragm Gasket: Stainless Steel
Valve Seat: Brass
Poppet Valve Spring: Stainless Steel
Seals: Buna-N (fluorocarbon available)
Whirl Disc: Acetal
Element (20, 10, 3 Micron): Phenolic Impregnated Acrylic Fibers
Stud: Zinc Plated Steel
Baffle Plate: Acetal
Base Nut: Aluminum
Drain: Brass and Zinc Plated Steel
Bowl: Polycarbonate or Machined Aluminum
Bowl Guard: Stainless Steel
Drain: - Manual: Brass and Plated Steel
 - Float: Anodized Aluminum w/ Acetal and Stainless Steel Float Mechanism
 - Impulse: Machined Aluminum, Brass, and Buna-N

Flow Characteristics



Dimensions



Ordering Information

C01-1000-2

Bowl Size		Bowl Type		Pressure		Elements		Pipe Size		OPTIONS	
5 oz.	2	Polycarbonate	0	10-130 Relieving	0	20 Micron	0	1/4"	2	Anodizing	
8 oz.	1	Polycarbonate w/ Guard	1	10-130 Non-Relieving	1	10 Micron	1	3/8"	3	No Anodizing (Standard)	Blank
		Metal	2	5-60 Relieving	2	3 Micron	2	1/2"	4	Blue	A1
		Metal w/ Sight Level	3	5-60 Non-Relieving	3					Black	A2
				3-30 Relieving	4					Clear	A3
				3-30 Non-Relieving	5					Green	A4
				20-250 Relieving	6					Red	A5
				20-250 Non-Relieving	7					Yellow	A6
										Gold	A7
										Purple	A8
										Drain	
										Manual (Standard)	Blank
										Impulse	D
										Seals	
										Buna-N (Standard)	Blank
										Fluorocarbon	V
										Tamperproof	
										Tamperproof	T
										Preset	P
										Preset and Tamperproof	PT
										Attachment Parts	
										Bracket	B
										Gauge	G
										Knob	K