



Features

- Filter and regulator consolidated into one assembly
- Reduces footprint of air prep assembly
- Polycarbonate or aluminum bonnets available
- Polycarbonate or aluminum bowls available
- Manual or impulse drains available
- Preset and tamperproof options

Operating Specifications

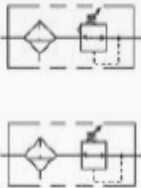
- Bowl Capacity:** 1 oz.
- Maximum Pressure Ratings:**
- Metal Bowl: 250 PSI
 - Polycarbonate Bowl: 150 PSI
- Temperature Ratings:**
- Metal Bowl: 0-200°F
 - Polycarbonate Bowl: 0-120°F

Materials of Construction

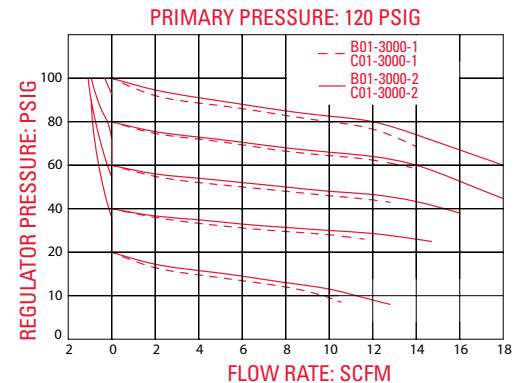
- Body:** Machined Aluminum
Bonnet: Aluminum or Polycarbonate
Bowl: Polycarbonate or Machined Aluminum
Seat: Nylon
Poppet Spring: Stainless Steel
Whirl Disc: Aluminum
Element (20 and 10 Micron): Phenolic Impregnated Cellulose
Element (5 Micron): Polypropylene
Element Retainer: Celanese
Poppet Valve: Buna-N (fluorocarbon available)
Seat: Nylon **Locking Nut:** Zinc Plated Steel
Compression Spring: Spring Steel
Adjustment Screw: Zinc Plated Steel
Diaphragm Assembly: Steel, Brass, Buna-N (fluorocarbon available)
Drain: • Manual: Brass and Plated Steel
 • Impulse: Machined Aluminum, Zinc Plated Steel, and Buna-N (fluorocarbon available)

Accessories & Kits

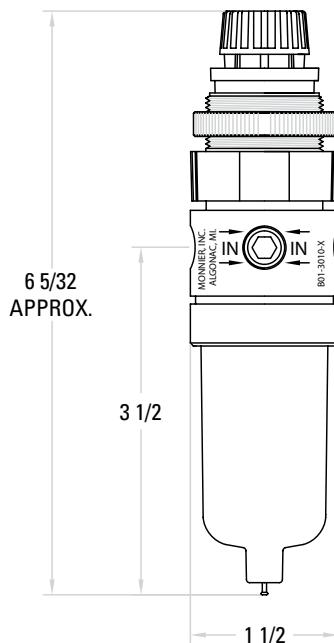
- Elements:** 20 Micron: 23004 - 10 Micron: 23025 - 5 Micron: 23040
- Regulator Repair Kits:**
- Relieving: 13532 - Non-Relieving: 13533
- Bowl Kit w/ Manual Drain:**
- Polycarbonate: 23520 - Aluminum: 23533
- Bowl Kit w/ Impulse Drain:**
- Polycarbonate: 23521 - Aluminum: 23534
- Bracket Kit:** - Polycarbonate Bonnet: 13536 - Aluminum Bonnet: 13534
- Mounting Nut Only:** - Polycarbonate Bonnet: 13133 - Aluminum Bonnet: 13025



Flow Characteristics



Dimensions



Ordering Information

B01-3000-2

Bonnet	
Polycarbonate	B
Aluminum	C

Bowl Type	
Polycarbonate	0
Polycarbonate w/ Bowl Guard	1
Metal	2

Pressure	
10-130 Relieving	0
10-130 Non-Relieving	1
5-60 Relieving	2
5-60 Non-Relieving	3
3-30 Relieving	4
3-30 Non-Relieving	5
20-250 Relieving	6
20-250 Non-Relieving	7
1-10 Relieving	8
1-10 Non-Relieving	9

Elements	
20 Micron	0
10 Micron	1
5 Micron	2

Pipe Size	
1/8"	1
1/4"	2

OPTIONS

Anodizing	
No Anodizing (Standard)	Blank
Blue	A1
Black	A2
Clear	A3
Green	A4
Red	A5
Yellow	A6
Gold	A7
Purple	A8
Drain	
Manual (Standard)	Blank
Impulse	D
Seals	
Buna-N (Standard)	Blank
Fluorocarbon	V
Tamperproof	
Bracket	B
Gauge	G
Knob	K
Attachment Parts	
Tamperproof	T
Preset	P
Preset and Tamperproof B01	PT
Preset and Tamperproof C01	PTS